



Atostar

*S T A I N L E S S S T E E L ,
F L U O R C O P O L Y M E R L I N E D
B A L L V A L V E S
A S M E • D I N • J I S*



Quality
System
Certificate

For Clean Production And A Clean Environment

FCD ATETB0011-00
(Bulletin VA-11 [E/A4])

Atostar Valves with 1.4408/CF-8M Body Armor Meet ASME, DIN and JIS Standards

The Flowserve Atostar stainless steel, fluorocopolymer lined ball valves deliver improved performance, reliability and safety. Atostar full port valves provide bubble-tight shutoff, low maintenance, no-leak stem seals and the safety assurance of a blowout-proof stem assembly.

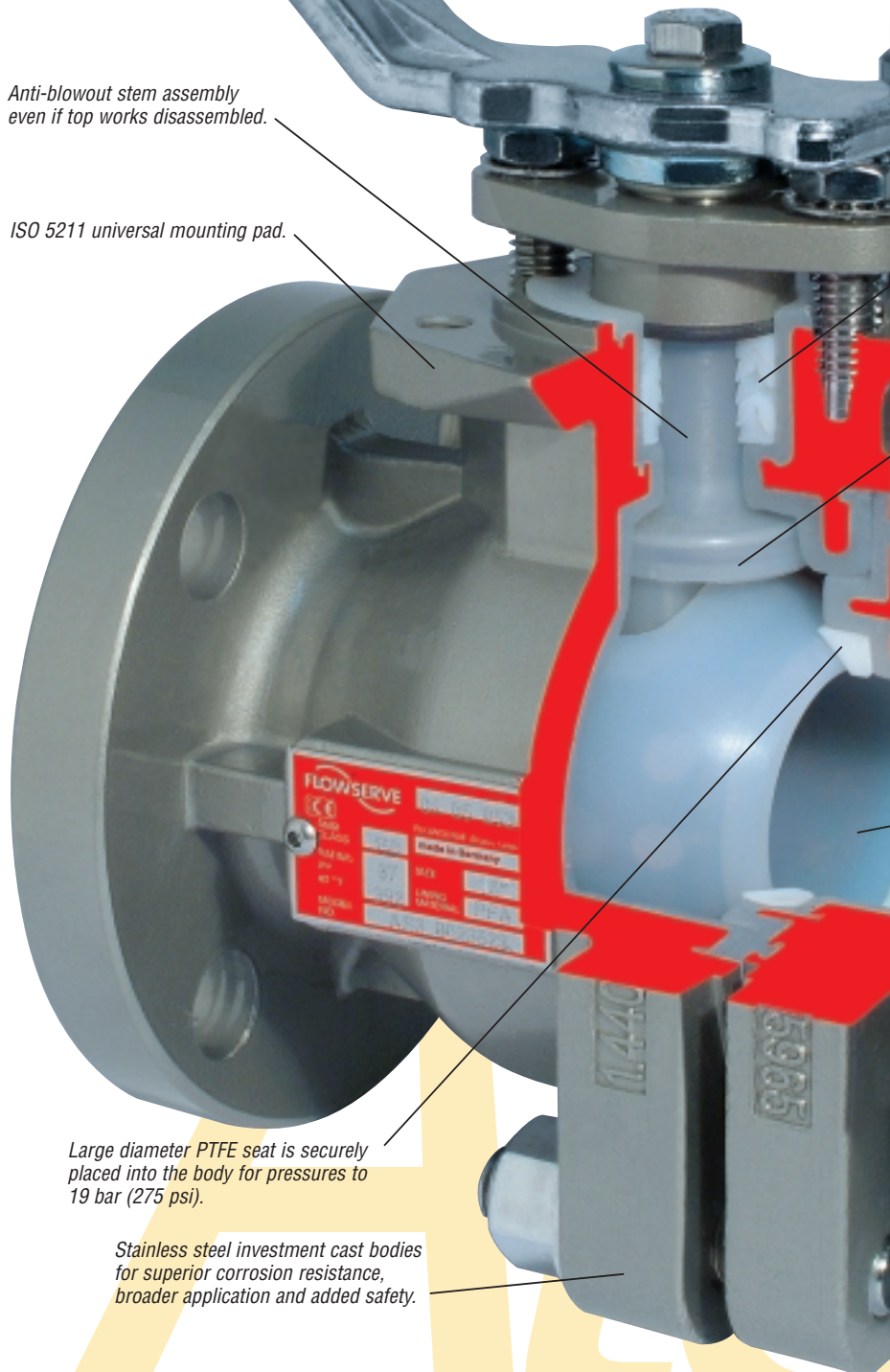


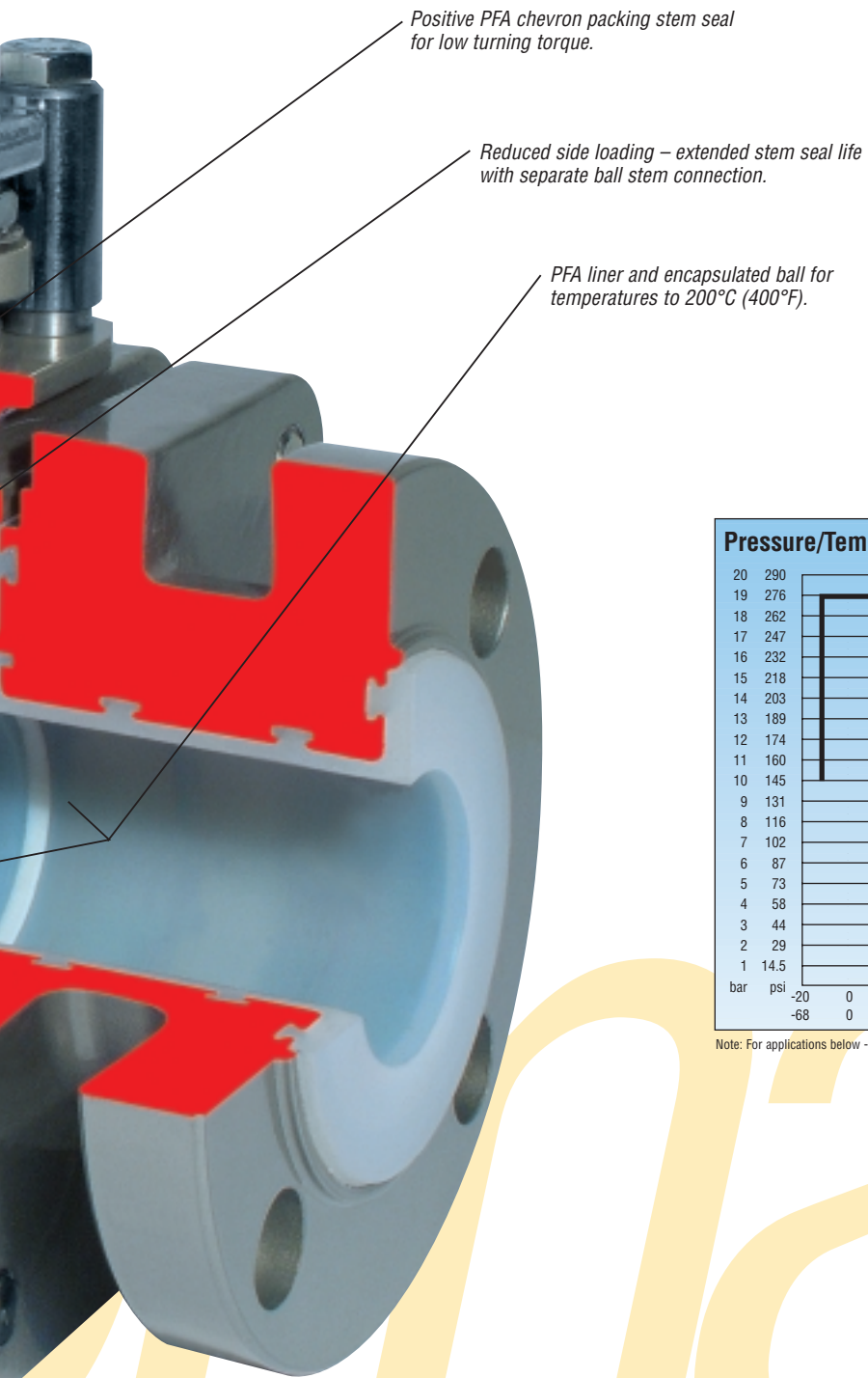
Anti-blowout stem assembly even if top works disassembled.

ISO 5211 universal mounting pad.

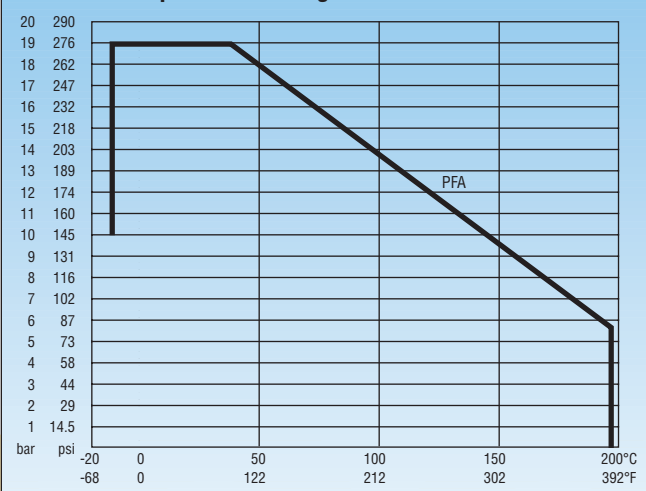
Large diameter PTFE seat is securely placed into the body for pressures to 19 bar (275 psi).

Stainless steel investment cast bodies for superior corrosion resistance, broader application and added safety.





Pressure/Temperature Ratings



Note: For applications below -10°C (+14°F) consult factory.

Technical Data

Applications

- Pharmaceutical and semiconductor clean room services
- Frequent solvent and chemical cleaning services
- Highly corrosive atmospheres
- Service temperatures below DCI rating <-29°C (-20°F)
- Offshore



Models

Atostar (AS1 - AS5) full port valves from DN15 (DN $\frac{1}{2}$ "") through DN150 (DN6").
 Atostar (AS6) full port valves from DN1" through DN8" with integral heating jacket

- AS-1 DIN EN 1092-2/PN16 flange connection
- AS-2 ASME B16.5, Class 150, flange connection, long pattern
- AS-3 ASME B16.5, Class 150, flange connection, short pattern
- AS-4 JIS B 2220, Table 5, flange connection, short pattern
- AS-5 JIS B 2220, Table 5 flange connection, special face to face
- AS-6 ASME B16.5, Class 150, flange connection, short pattern



Control Valves

V-port and C-port balls may be specified in sizes DN15 (DN $\frac{1}{2}$ "") through DN150 (DN6").

Material Specification					
No.	Designation	Pieces	Material	Material-No./DIN	ASTM/AISI
010	body	1	stainless steel/PFA	1.4408/DIN EN 10213-4	A 744 CF-8M
020	side piece	1	stainless steel/PFA	1.4408/DIN EN 10213-4	A 744 CF-8M
030	seat ring	2	PTFE	PTFE	
040	stem	1	stainless steel/PFA	1.4470/DIN EN 10283	A 890 CD3MN
050	ball DN 25-50, DN $\frac{1}{2}$ "-2" DN 65-100, DN 3"-6"	1	cast steel/PFA	1.0619/ DIN EN 10213-2	A 216 Gr WCB
		1	ductile iron/PFA	EN-JS-1049 (GGG-40.3) / DIN EN 1563	A 395
060	gland follower	1	stainless steel/PTFE-Graphite	1.4308/DIN EN 10283	A 743 CF-8
070	hand lever T-lever DN 150, DN 6"	1	stainless steel	1.4308/DIN EN 10283	A 743 CF-8
		1	stainless steel	1.4308/DIN EN 10283	A 743 CF-8
080	stud bolt	1 set	stainless steel	1.4301/DIN 17440	A193 B8
090	hexagon nut	1 set	stainless steel	1.4301/DIN 17440	A 194 8
100	packing material (chevron)	1 set	PTFE* PTFE-Graphite*		
110	hexagon nut	2	stainless steel	1.4301/DIN 17440	A 194 8
120	stud bolt	2	stainless steel	1.4301/DIN 17440	A 193 B8
130	lock washer	1	stainless steel	1.4301/DIN 17440	AISO 304
140	hexagon bolt	1	stainless steel	1.4301/DIN 17440	A 193 B8
150	serrated lock washer	2	stainless steel	1.4310/DIN EN 10270-3	AISI 301
170	grounding device	1	stainless steel	1.4310/DIN EN 10270-3	AISI 301
210	stop DN 15-100, DN $\frac{1}{2}$ "-4" DN 150, DN 6"	1	stainless steel	1.4301/DIN 17440	AISI 304
		1	stainless steel	1.4104/DIN 17440	AISI 430F
220	hexagon bolt	1	stainless steel	1.4301/DIN 17440	A 193 B8

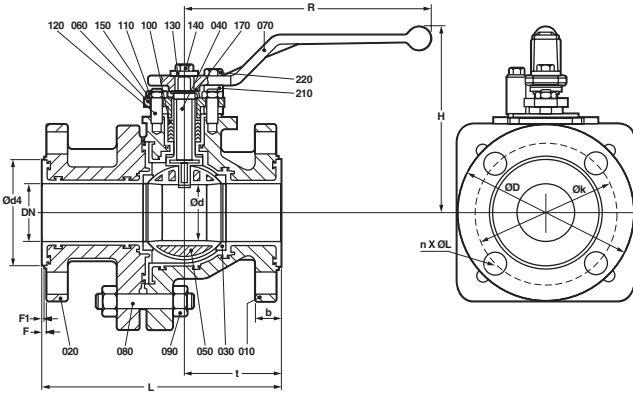
* Optional

Ceramic ball (Al₂O₃) available through DN150 (DN6").
 Other lining materials available on request.

AS-1

Face-to-Face Dimensions
Flange Connections

DIN EN 558-1, line 1
DIN EN 1092-2 PN16



Torque Ratings – AS-1

Size mm	0 bar Δp Nm (0 psi Δp in/lbs)
15	7 (62)
20	7 (62)
25	7 (62)
40	20 (177)
50	27 (239)
65	38 (451)
80	54 (478)
100	63 (558)
150	160 (1416)

Flow Rates – AS-1

Size mm	K_v (C) Value
15	16.9 (19.6)
20	24.4 (28.4)
25	46.6 (54.1)
40	126.9 (147.5)
50	202.5 (235.4)
65	329.3 (382.7)
80	507.8 (590.2)
100	953.4 (1108.1)
150	1577.7 (1833.8)

$K_v = m^3/hr$ at 1 bar ΔP (C, = US gal/min at 1 psi ΔP)

Test temperature is 20°C (68°F).
Test medium is air.
For actuator sizing torque, refer to the Durco Technical Manual.

Dimensions

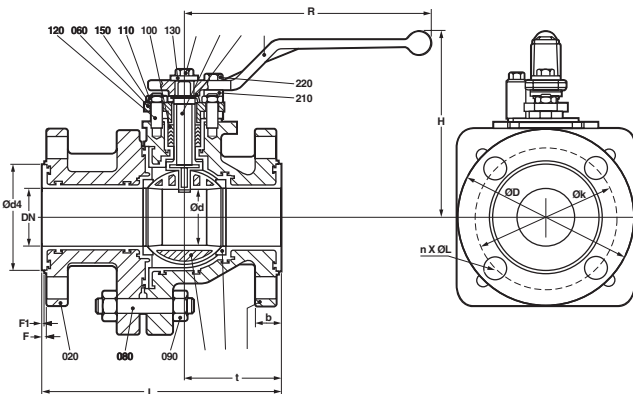
DN/ DIN	L mm (in)	H mm (in)	R mm (in)	t mm (in)	ød mm (in)	b mm (in)	øD mm (in)	øk mm (in)	nxøL mm (in)	ød4 mm (in)	F mm (in)	F1 mm (in)	Weight kg/lbs
15	130 (5 1/8)	120 (4 23/32)	160 (6 19/64)	60.5 (2 3/8)	15 (19/32)	15.5 (39/64)	95 (3 47/64)	65 (2 9/16)	4x14 (35/65)	42 (1 21/32)	4.5 (1 1/4)	3 (1/8)	4.5 (9.9)
20	150 (5 29/32)	120 (4 23/32)	160 (6 19/64)	59 (2 5/16)	20 (51/64)	16 (5/8)	105 (4 9/64)	75 (2 61/64)	4x14 (35/65)	56 (2 13/64)	3 (1/8)	1.5 (1/16)	5.1 (11.2)
25	160 (6 19/64)	124 (4 7/8)	160 (6 19/64)	55.5 (2 3/16)	24 (15/16)	18 (45/64)	115 (4 17/32)	85 (3 11/32)	4x14 (35/65)	65 (2 9/16)	4 (5/32)	2 (5/64)	5.7 (12.6)
40	200 (7 7/8)	145 (5 45/64)	210 (8 17/64)	73 (2 7/8)	38 (1 1/2)	18 (45/64)	150 (5 29/32)	110 (4 21/64)	4x18 (45/64)	85 (3 11/32)	4 (5/32)	2 (5/64)	11.2 (24.7)
50	230 (9 1/16)	160 (6 19/64)	210 (8 17/64)	79.5 (3 1/8)	48 (1 57/64)	19 (3/4)	165 (6 1/2)	125 (4 59/64)	4x18 (45/64)	98 (3 55/64)	4 (5/32)	2 (5/64)	14.8 (32.6)
65	290 (11 21/64)	200 (7 7/8)	313 (12 21/64)	93.5 (3 11/16)	65 (2 9/16)	20 (25/32)	185 (7 9/32)	145 (5 45/64)	4x18 (45/64)	118 (4 41/64)	4 (5/32)	2 (5/64)	17.2 (37.9)
80	310 (12 13/64)	205 (8 1/16)	313 (12 21/64)	92 (3 5/8)	72 (2 53/64)	21 (53/64)	200 (7 7/8)	160 (6 19/64)	8x18 (45/64)	133 (5 15/64)	4 (5/32)	2 (5/64)	32.5 (71.7)
100	350 (13 25/32)	218 (8 37/64)	313 (12 21/64)	110.5 (4 11/32)	95 (3 47/64)	21 (53/64)	220 (8 21/32)	180 (7 3/32)	8x18 (45/64)	152 (5 63/64)	4 (5/32)	2 (5/64)	49.9 (110.0)
150	480 (18 29/32)	316 (12 7/16)	337 (13 17/64)*	180 (7 3/32)	147 (5 51/64)	28 (1 7/64)	279.4 (11)	241.3 (9 1/2)	8x22 (55/64)	208 (8 3/16)	4 (5/32)	2 (5/64)	103.0 (227.1)

* Pass-through handlever $\varnothing 26.51$ inch standard

AS-2

Flange Connections

ASME B16.5-150 lbs



Torque Ratings – AS-2

Size in	0 psi Δp in/lbs (0 bar Δp Nm)
3/4	62 (7)
1	62 (7)
1 1/2	177 (20)
2	239 (27)
3	372 (42)
4	558 (63)
6	1416 (160)

Flow Rates – AS-2

Size in	C_v (K) Value
3/4	28.4 (24.4)
1	54.1 (46.6)
1 1/2	147.5 (126.9)
2	235.4 (202.5)
3	590.2 (507.8)
4	1108.1 (953.4)
6	1833.8 (1577.7)

$C_v = US$ gal/min at 1 psi ΔP ($K_v = m^3/hr$ at 1 bar ΔP)

Test temperature is 68°F (20°C).
Test medium is air.
For actuator sizing torques, refer to the Durco Technical Manual.

Dimensions

DN/ ASME	L mm (in)	H mm (in)	R mm (in)	t mm (in)	ød mm (in)	b mm (in)	øD mm (in)	øk mm (in)	nxøL mm (in)	ød4 mm (in)	F mm (in)	F1 mm (in)	Weight kg/lbs
3/4	150 (5 29/32)**	120 (4 23/32)	160 (6 19/64)	59 (2 5/16)	20 (51/64)	16 (5/8)	98.5 (3 7/8)	69.9 (2 3/4)	4x16 (5/8)	43 (1 11/16)	3 (1/8)	1.5 (1/16)	4.8 (10.6)
1	152.4 (6)	123 (4 27/32)	160 (6 19/64)	54.1 (2 1/8)	24 (15/16)	16.6 (21/32)	107.9 (4 1/4)	79.2 (3 1/8)	4x16 (5/8)	51 (2 1/64)	4 (5/32)	2 (5/64)	5.3 (11.7)
1 1/2	178 (7)	145 (5 45/64)	210 (8 17/64)	75 (2 61/64)	38 (1 1/2)	20 (29/32)	127 (5)	98.6 (3 7/8)	4x16 (5/8)	73 (2 7/8)	4 (5/32)	2 (5/64)	8.8 (19.4)
2	203 (8)	160 (6 19/64)	210 (8 17/64)	82 (3 15/64)	48 (1 57/64)	21.5 (27/32)	152.4 (6)	120.6 (4 3/4)	4x19 (9/4)	92 (3 5/8)	4 (5/32)	2 (5/64)	13.4 (29.5)
3	241 (9 1/2)	205 (8 1/16)	313 (12 21/64)	97.5 (3 27/32)	72 (2 53/64)	26.5 (1 3/64)	190.5 (7 1/2)	152.4 (6)	4x19 (9/4)	127 (5)	4 (5/32)	2 (5/64)	30.6 (67.5)
4	292 (11 1/2)	218 (8 37/64)	313 (12 21/64)	116 (4 37/64)	95 (3 47/64)	26.5 (1 3/64)	228.6 (9)	190.5 (7 1/2)	8x19 (9/4)	157 (6 3/16)	4 (5/32)	2 (5/64)	45.7 (100.8)
6	356 (14)	312 (12 9/32)	337 (13 17/64)*	180 (7 3/32)	147 (5 51/64)	28 (1 7/64)	279.4 (11)	241.3 (9 1/2)	8x22 (55/64)	208 (8 3/16)	4 (5/32)	2 (5/64)	95.0 (209.4)

* Pass-through handlever $\varnothing 26.51$ inch standard

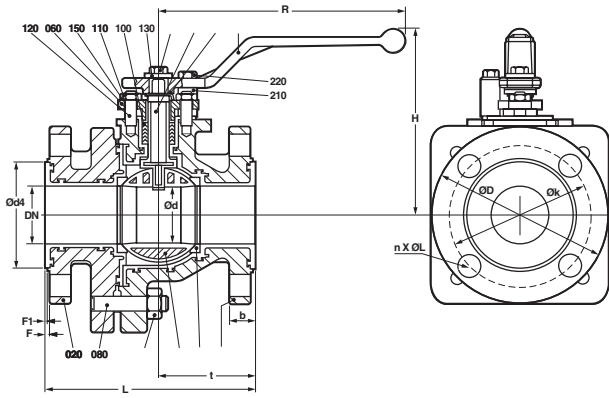
** Face-to-Face Dimensions acc. DIN EN 558-1 (Basic series 1)

Technical Data

AS-3

Face-to-Face Dimensions
Flange Connections

ASME B16.10
ASME B16.5-CL150, shot pattern



Torque Ratings – AS-3	
Size mm	0 bar Δ p Nm (0 psi Δ p in/lbs)
1/2	62 (7)
3/4	62 (7)
1	62 (7)
1 1/2	177 (20)
2	239 (27)
3	478 (54)
4	558 (63)
6	1416 (160)

Flow Rates – AS-3	
Size mm	K _v (C _v) Value
1/2	19.6 (16.9)
3/4	28.4 (24.4)
1	54.1 (46.6)
1 1/2	147.5 (126.9)
2	235.4 (202.5)
3	590.2 (507.8)
4	1108.1 (953.4)
6	1833.8 (1577.7)

Test temperature is 68°F (20°C).
Test medium is air.
For actuator sizing torques, refer to the Durco Technical Manual.

C_v = US gal/min at 1 psi Δ P (K_v = m³/hr at 1 bar Δ P)

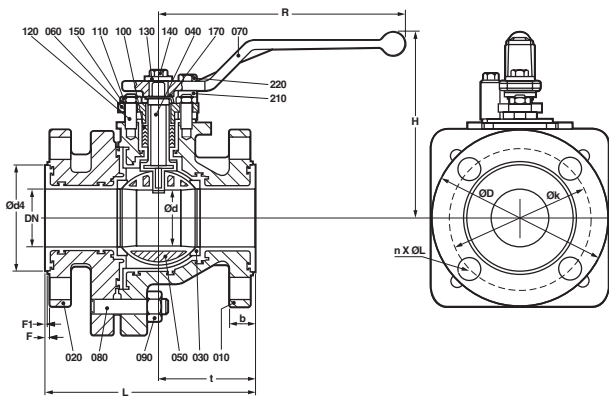
Dimensions													
DN/ASME	L mm (in)	H mm (in)	R mm (in)	t mm (in)	Ød mm (in)	b mm (in)	ØD mm (in)	Øk mm (in)	nxØL mm (in)	Ød4 mm (in)	F mm (in)	F1 mm (in)	Weight kg/lbs
1/2	127 (5)**	120 (4 23/32)	160 (6 19/64)	59 (2 5/16)	15 (19/32)	14 (35/64)	88.9 (3 1/2)	60.5 (2 3/8)	4x16 (5/8)	36 (1 21/64)	3 (1/8)	1.5 (1/16)	4.3 (9.5)
3/4	127 (5)**	120 (4 23/32)	160 (6 19/64)	59 (2 5/16)	20 (51/64)	16 (5/8)	98.5 (3 7/8)	69.9 (2 3/4)	4x16 (5/8)	43 (1 11/16)	3 (1/8)	1.5 (1/16)	4.6 (10.1)
1	127 (5)	123 (4 27/32)	160 (6 19/64)	54.1 (2 1/8)	24 (15/16)	16.6 (21/32)	107.9 (4 1/4)	79.2 (3 1/8)	4x16 (5/8)	51 (21/64)	4 (5/32)	2 (5/64)	4.7 (10.4)
1 1/2	165 (6 1/2)	146 (5 3/4)	210 (8 17/64)	75 (2 51/64)	38 (1 1/2)	20 (25/32)	127 (5)	98.6 (3 7/8)	4x16 (5/8)	73 (2 7/8)	4 (5/32)	2 (5/64)	7.8 (17.2)
2	178 (7)	161.5 (6 23/64)	210 (8 17/64)	82 (3 15/64)	48 (1 57/64)	21.5 (27/32)	152.4 (6)	120.6 (4 3/4)	4x19 (3/4)	92 (3 5/8)	4 (5/32)	2 (5/64)	11.5 (25.4)
3	203 (8)	205 (8 1/16)	313 (12 21/64)	97.5 (3 27/32)	72 (2 53/64)	26.5 (1 3/64)	190.5 (7 1/2)	152.4 (6)	4x19 (3/4)	127 (5)	4 (5/32)	2 (5/64)	25.7 (56.7)
4	229 (9)	218 (8 37/64)	313 (12 21/64)	116 (4 37/64)	95 (3 47/64)	26.5 (1 3/64)	228.6 (9)	190.5 (7 1/2)	8x19 (3/4)	157 (6 3/16)	4 (5/32)	2 (5/64)	36.9 (81.4)
6	267 (10 33/64)	303 (11 59/64)	337 (13 17/64)*	134 (5 9/32)	130 (5 1/8)	28 (1 1/64)	280 (11 1/32)	240 (9 29/64)	8x23 (29/32)	208 (8 3/16)	4 (5/32)	2 (5/64)	93.0 (205.0)

* Pass-through handlever Ø26.51 inch standard
** Face-to-Face Dimensions not acc. ISO 5752, ASME 16.10

AS-4

Face-to-Face Dimensions
Flange Connections

ASME B16.10
JIS B 2220 Table 5, shot pattern



Torque Ratings – AS-4	
Size mm	0 bar Δ p Nm (0 psi Δ p in/lbs)
15	7 (62)
20	7 (62)
25	7 (62)
40	20 (177)
50	27 (239)
65	51 (451)
80	54 (478)
100	63 (558)
150	160 (1416)

Flow Rates – AS-4	
Size mm	K _v (C _v) Value
15	16.9 (19.6)
20	24.4 (28.4)
25	46.6 (54.1)
40	126.9 (147.5)
50	202.5 (235.4)
65	329.3 (382.7)
80	507.8 (590.2)
100	953.4 (1108.1)
150	1577.7 (1833.8)

Test temperature is 68°F (20°C).
Test medium is air.
For actuator sizing torques, refer to the Durco Technical Manual.

C_v = US gal/min at 1 psi Δ P (K_v = m³/hr at 1 bar Δ P)

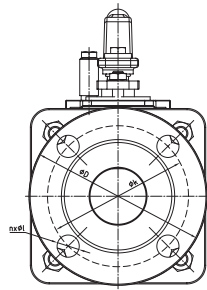
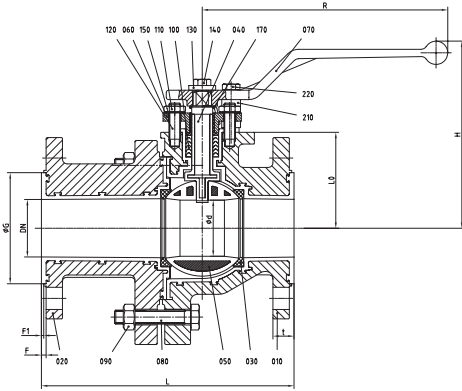
Dimensions													
DN/JIS	L mm (in)	H mm (in)	R mm (in)	t mm (in)	Ød mm (in)	b mm (in)	ØD mm (in)	Øk mm (in)	nxØL mm (in)	Ød4 mm (in)	F mm (in)	F1 mm (in)	Weight kg/lbs
15	127 (5)	120 (4 23/32)	160 (6 19/64)	59 (2 5/16)	15 (19/32)	14 (35/64)	95 (3 47/64)	70 (2 3/4)	4x15 (19/32)	50 (1 31/32)	3 (1/8)	1.5 (1/16)	4.5 (9.9)
20	127 (5)	120 (4 23/32)	160 (6 19/64)	59 (2 5/16)	20 (51/64)	16 (5/8)	100 (3 15/16)	75 (2 51/64)	4x15 (19/32)	56 (2 13/64)	3 (1/8)	1.5 (1/16)	4.7 (10.4)
25	127 (5)	120 (4 23/32)	160 (6 19/64)	54.5 (2 9/64)	24 (15/16)	17 (43/64)	125 (4 59/64)	90 (3 35/64)	4x19 (3/4)	65 (2 5/16)	4 (5/32)	2 (5/64)	4.7 (10.4)
40	165 (6 1/2)	145 (5 45/64)	210 (8 17/64)	73 (2 7/8)	38 (1 1/2)	18 (45/64)	140 (5 33/64)	105 (4 9/64)	4x19 (3/4)	78 (3 5/64)	4 (5/32)	2 (5/64)	7.8 (17.2)
50	178 (7)	160 (6 19/64)	210 (8 17/64)	78.5 (3 5/32)	48 (1 57/64)	18 (45/64)	155 (6 7/64)	120 (4 23/32)	4x19 (3/4)	95 (3 47/64)	4 (5/32)	2 (5/64)	11.5 (25.4)
65	190.5 (7 1/2)	200 (7 7/8)	313 (12 21/64)	93.5 (3 11/16)	65 (2 9/16)	20 (25/32)	175 (6 57/64)	140 (5 33/64)	4x19 (3/4)	115 (4 17/32)	4 (5/32)	2 (5/64)	23.7 (52.2)
80	203 (8)	205 (8 1/16)	313 (12 21/64)	91 (3 37/64)	72 (2 53/64)	20 (25/32)	185 (7 9/32)	150 (5 29/32)	8x19 (3/4)	124 (4 7/8)	4 (5/32)	2 (5/64)	25.7 (56.7)
100	229 (9)	220 (8 21/32)	313 (12 21/64)	109.5 (4 5/16)	95 (3 47/64)	20 (25/32)	210 (8 17/64)	175 (6 57/64)	8x19 (3/4)	145 (5 45/64)	4 (5/32)	2 (5/64)	36.9 (81.4)
150	267 (10 33/64)	303 (11 59/64)	337 (13 17/64)*	134 (5 9/32)	130 (5 1/8)	28 (1 7/64)	280 (11 1/32)	240 (9 29/64)	8x23 (29/32)	208 (8 3/16)	4 (5/32)	2 (5/64)	92 (202.8)

* Pass-through handlever Ø26.51 inch standard

AS-5

Flange Connections

JIS B 2JIS B 2220 Table 5,



Torque Ratings – AS-5	
Size mm	0 bar Δp Nm (0 psi Δp in/lbs)
15	7 (62)
20	7 (62)
25	8 (71)
40	21 (186)
50	27 (239)
65	38 (336)
80	42 (372)
100	47 (416)

Test temperature is 68°F (20°C).
Test medium is air.
For actuator sizing torques, refer to the
Durco Technical Manual.

Flow Rates – AS-5	
Size mm	K _v (C _v) Value
15	16.9 (19.6)
20	24.4 (28.4)
25	46.6 (54.1)
40	126.9 (147.5)
50	202.5 (235.4)
65	329.3 (382.7)
80	507.8 (590.2)
100	953.4 (1108.1)

C_v = US gal/min at 1 psi ΔP (K_v = m³/hr at 1 bar ΔP)

Dimensions

DN/ JIS	L mm (in)	H mm (in)	R mm (in)	t mm (in)	ϕd mm (in)	b mm (in)	ϕD mm (in)	ϕk mm (in)	nx ϕl mm (in)	$\phi d4$ mm (in)	F mm (in)	F1 mm (in)	Weight kg/lbs
15	140 (5 33/64)	120 (4 23/32)	160 (6 19/64)	15 (19/32)	14 (35/64)	95 (3 47/64)	47.5 (1 7/8)	70 (2 3/4)	4x15 (19/32)	50 (1 31/32)	3 (1/8)	1.5 (1/16)	4.3 (9.5)
20	152 (5 63/64)	120 (4 23/32)	160 (6 19/64)	20 (51/64)	16 (5/8)	100 (3 15/16)	47.5 (1 7/8)	75 (2 61/64)	4x15 (19/32)	56 (2 13/64)	3 (1/8)	1.5 (1/16)	4.8 (10.6)
25	165 (6 1/2)	120 (4 23/32)	160 (6 19/64)	24 (15/16)	17 (43/64)	125 (4 59/64)	49 (1 15/16)	90 (3 35/64)	4x19 (3/4)	65 (2 9/16)	4 (5/32)	2 (5/64)	5 (11.0)
40	191 (7 33/64)	145 (5 45/64)	210 (8 17/64)	38 (1 1/2)	18 (45/64)	140 (5 33/64)	69 (3 23/32)	105 (4 9/64)	4x19 (3/4)	78 (3 5/64)	4 (9/32)	2 (9/64)	8.1 (17.9)
50	216 (8 1/2)	160 (6 19/64)	210 (8 17/64)	48 (1 57/64)	18 (45/64)	155 (6 7/64)	82 (3 15/64)	120 (4 23/32)	4x19 (3/4)	95 (347/64)	4 (5/32)	2 (5/64)	12.3 (27.1)
65	240 (9 29/64)	200 (7 7/8)	313 (12 21/64)	65 (2 9/16)	20 (25/32)	175 (6 57/64)	120 (4 23/32)	140 (5 33/64)	4x19 (3/4)	115 (4 17/32)	4 (5/32)	2 (5/64)	24.4 (53.8)
80	250 (9 27/32)	205 (8 1/16)	313 (12 21/64)	72 (2 53/64)	20 (25/32)	185 (7 9/32)	123 (4 27/32)	150 (5 29/32)	8x19 (3/4)	124 (4 7/8)	4 (5/32)	2 (5/64)	27.4 (60.4)
100	280 (11 1/64)	220 (8 21/32)	313 (12 21/64)	95 (3 47/64)	20 (25/32)	210 (8 17/64)	128 (5 3/64)	175 (6 57/64)	8x19 (3/4)	145 (5 45/64)	4 (5/32)	2 (5/64)	39.5 (87.1)

Flowserve offers a complete line of Atomac Lined Ball Valves and related equipment.

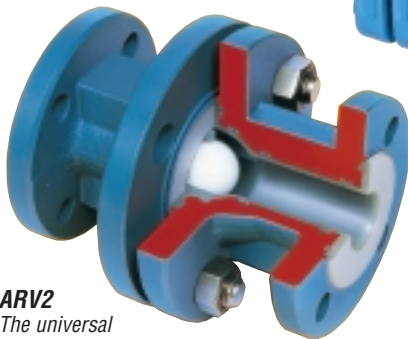
AKH2.2
The low maintenance
full-port lined
ball valve.



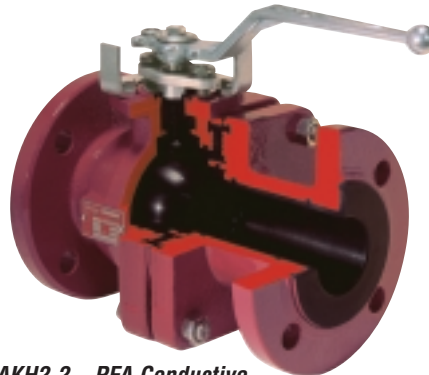
ASF Strainer
The lined dirt catcher with
multiple choice of filter mesh.



ARV2
The universal
lined ball check valve
for either vertically or
horizontally applications.



AKH2.2 – PFA Conductive
The lined valve
which keeps strong static
electricity build-up under control.



V-ball & C-ball
Optional items for
controlling and
elimination of media
build-up in ball cavity.



Flowserve has the answer to your corrosion resistant, quarter-turn valving needs.

Clockwise from top right.

Durco[®] BTV-2000

PTFE or UHMWPE lined chemical service valve

Atomac[®]

Lined ball valves

- ASME/ISO, standard and full port
- Specialty valves
- Valve products and accessories

Durco[®] SleeveLine[®]

Non-lubricated, PTFE-sleeved plug valves

- G4 Isolation
- G4E – DIN Mounting Pad
- G4 Marathon™
- TSG4 Severe Service

Durco[®] T-Line[®]

Non-lubricated, PTFE-lined plug valves

Big Max[®] Butterfly

High performance valves

Automax[®]

Valve automation systems

- Actuators
- Controls with smart technology
- Accessories



For more information, contact:



Flowserve Ahaus GmbH
 Von Braun Strasse 19a
 D-48683 Ahaus
 Germany
 Phone: + 49.2561.686.100
 Fax: + 49.2561.686200
 www.flowserve.com

Printed in U.S.A.
 September 2004
 © Flowserve Corporation