

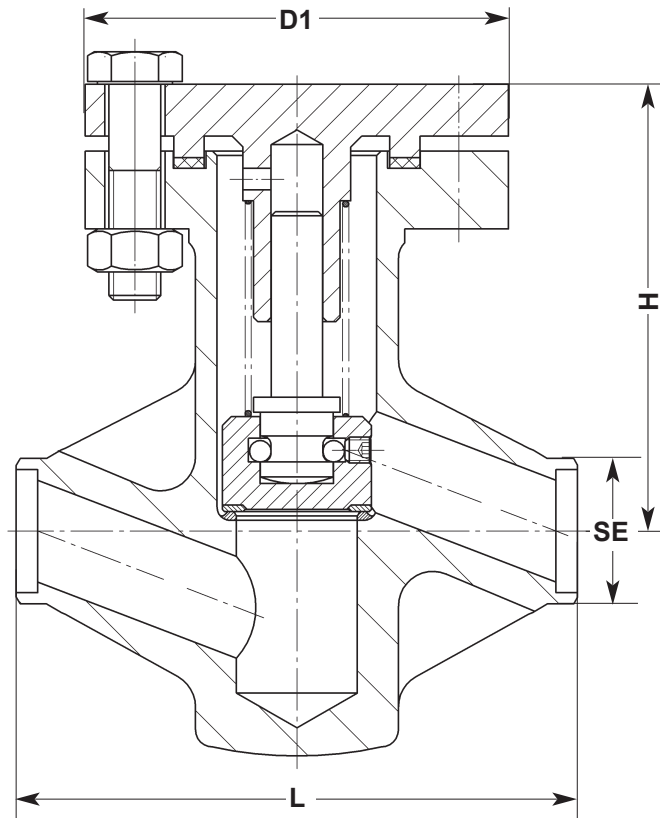
DN 15 - 50			
PN 40			
	C.S.	S.S.	Low temp.
Tmin.	-10°C	-200°C	-50°C
Tmax.	+400°C	+400°C	+300°C

Permissible working pressure acc. EN 1092 - Part 1
Terms of delivery DIN 3230/EN 12266-1
Face to face dimension acc. EN 12982

Available on request:

Special corrosion resistant materials for:
 Complete valve - Trim
 Soft sealing disc
 Heating jacket

Detailed information and more alternatives are given in the appendix.



Component	Material		
	C.S.	S.S.	Low temp.
	14.1-G-SE	14.1-G-SE-A4	14.1-G-SE-TT
Body	1.0619/1.0460	1.4408/1.4571	1.1138/1.0488
Body seat	1.4370	Stellite 21	1.4370
Bonnet	1.0460	1.4571	1.0566
Disc	1.4571	1.4571	1.4571
Disc surface	Stellite 6	Stellite 6	Stellite 6
Bonnet gasket	1.4571/graphite		
Bolts	A2/70	A2/70	A2/70
Nuts	A2/70	A2/70	A2/70
Spring	1.4571	1.4571	1.4571
Stem	1.4571	1.4571	1.4571

DN	SE [mm]	L [mm]	H [mm]	D1 [mm]	G [kg]
15	21,3* 2,0	130	105	98	4
20	26,9* 2,3	130	105	98	4
25	33,7* 2,6	130	105	98	4
32	42,4* 2,6	160	140	113	6
40	48,3* 2,6	180	145	113	8
50	60,3* 3,2	210	165	128	10

Non return valve, straight type with buttwelding ends acc. EN 12627; spring loaded, opening pressure around 0,2 bar. With camprofiled bonnet gasket made of stainless steel 1.4571 with a coating of pure graphite on both sides, housed in a tongue and grooved flange.

Carbon steel: Body made of cast/forged material 1.0619/1.0460, seat hardfaced with stainless steel 1.4370, disc made of stainless steel 1.4571, sealing surface hardfaced with stellite 6.

Stainless steel: Body made of cast/forged material 1.4408/1.4571, seat hardfaced with stellite 21, disc made of stainless steel 1.4571, sealing surface hardfaced with stellite 6.

Low temperature: Body made of cast/forged material 1.1138/1.0488, seat hardfaced with 1.4370, disc made of stainless steel 1.4571, sealing surface hardfaced with stellite 6.

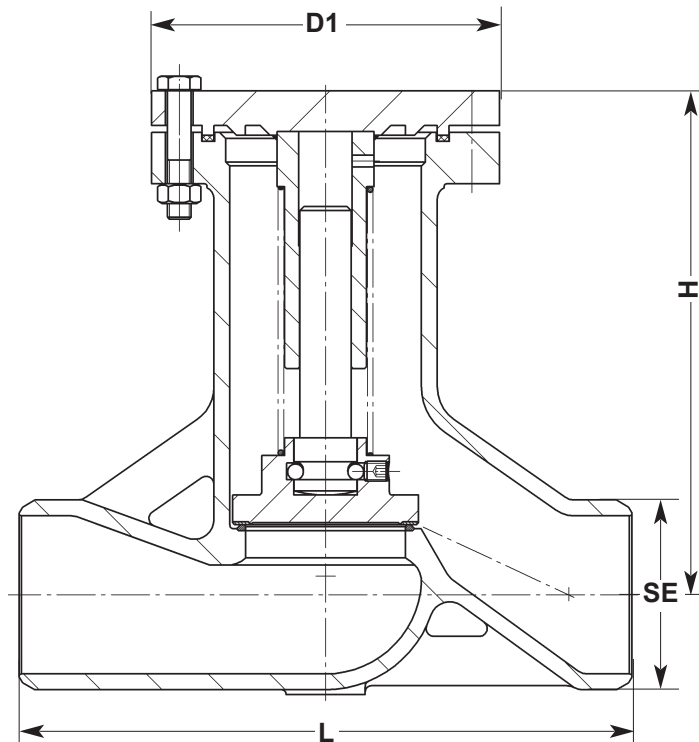
DN 65 - 400			
PN 40			
	C.S.	S.S.	Low temp.
Tmin.	-10°C	-200°C	-50°C
Tmax.	+400°C	+400°C	+300°C

Permissible working pressure acc. EN 1092 - Part 1
Terms of delivery DIN 3230/EN 12266-1
Face to face dimension acc. EN 12982

Available on request:

- Special corrosion resistant materials for:
- Complete valve - Trim
- Soft sealing disc
- Heating jacket

Detailed information and more alternatives are given in the appendix.



Component	Material		
	C.S.	S.S.	Low temp.
	<i>14.1-G-SE</i>	<i>14.1-G-SE-A4</i>	<i>14.1-G-SE-TT</i>
Body	1.0619	1.4408	1.1138
Body seat	1.4370	Stellite 21	1.4370
Bonnet	1.0425	1.4571	1.0566
Disc	1.4571/1.0460	1.4571	1.4571
Disc surface	St.6/1.4009	Stellite 6	Stellite 6
Gasket	1.4571/graphite		
Bolts	A2/70	A2/70	A2/70
Nuts	A2/70	A2/70	A2/70
Spring	1.4310/1.4571	1.4571	1.4310/1.4571
Stem	1.4571	1.4571	1.4571

DN	SE [mm]	L [mm]	H [mm]	D1 [mm]	G [kg]
65	76,1* 3,6	290	190	143	13
80	88,9* 4,0	310	255	176	26
100	114,3* 5,0	350	260	210	34
125	139,7* 4,5	400	270	250	49
150	168,3* 5,6	480	415	308	88
200	219,1* 7,1	600	380	365	120
250	273,0* 8,0	730	530	435	142
300	323,9* 8,0	850	530	515	272
350	355,6* 8,8	980	530	584	366
400	406,4* 11,0	1100	545	648	484

Non return valve, straight type with buttwelding ends acc. EN 12627; spring loaded, opening pressure around 0,2 bar. With camprofiled bonnet gasket made of stainless steel 1.4571 with a coating of pure graphite on both sides, housed in a tongue and grooved flange.

Carbon steel: Body made of cast material 1.0619, seat hardfaced with stainless steel 1.4370, disc made of stainless steel 1.4571, hardfaced with stellite 6 up to DN 100; above made of 1.0460, hardfaced with 1.4009.

Stainless steel: Body made of cast material 1.4408, seat hardfaced with stellite 21, disc made of stainless steel 1.4571, sealing surface hardfaced with stellite 6.

Low temperature: Body made of cast material 1.1138, seat hardfaced with 1.4370, disc made of stainless steel 1.4571, sealing surface hardfaced with stellite 6.

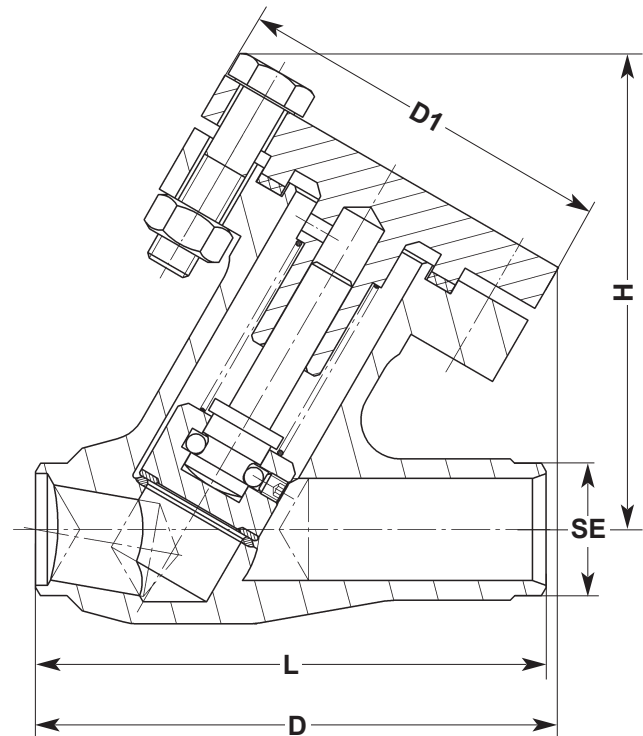
DN 15 - 50			
PN 40			
	C.S.	S.S.	Low temp.
Tmin.	-10°C	-200°C	-50°C
Tmax.	+400°C	+400°C	+300°C

Permissible working pressure acc. EN 1092 - Part 1
Terms of delivery DIN 3230/EN 12266-1
Face to face dimension acc. EN 12982

Available on request:

- Special corrosion resistant materials for:
- Complete valve - Trim
- Soft sealing disc
- Heating jacket

Detailed information and more alternatives are given in the appendix.



Component	Material		
	C.S.	S.S.	Low temp.
	14.1-S-SE	14.1-S-SE-A4	14.1-S-SE-TT
Body	1.0619/1.0460	1.4408/1.4571	1.1138/1.0488
Body seat	1.4370	Stellite 21	1.4370
Bonnet	1.0460	1.4571	1.0566
Disc	1.4571	1.4571	1.4571
Disc surface	Stellite 6	Stellite 6	Stellite 6
Gasket	1.4571/graphite		
Bolts	A2/70	A2/70	A2/70
Nuts	A2/70	A2/70	A2/70
Spring	1.4571	1.4571	1.4571
Stem	1.4571	1.4571	1.4571

DN	SE [mm]	L [mm]	D [mm]	H [mm]	D1 [mm]	G [kg]
15	21,3* 2,0	130	135	125	98	4
20	26,9* 2,3	130	135	125	98	4
25	33,7* 2,6	130	135	125	98	4
32	42,4* 2,6	160	175	155	113	6
40	48,3* 2,6	180	170	150	113	8
50	60,3* 3,2	210	205	180	128	10

Non return valve, y- type with buttwelding ends acc. EN 12627; spring loaded, opening pressure around 0,2 bar. With camprofiled bonnet gasket made of stainless steel 1.4571 with a coating of pure graphite on both sides, housed in a tongue and grooved flange.

Carbon steel: Body made of cast/forged material 1.0619/1.0460, seat hardfaced with stainless steel 1.4370, disc made of stainless steel 1.4571, sealing surface hardfaced with stellite 6 .

Stainless steel: Body made of cast/forged material 1.4408/1.4571, seat hardfaced with stellite 21, disc made of stainless steel 1.4571, sealing surface hardfaced with stellite 6.

Low temperature: Body made of cast/forged material 1.1138/1.0488, seat hardfaced with 1.4370, disc made of stainless steel 1.4571, sealing surface hardfaced with stellite 6.

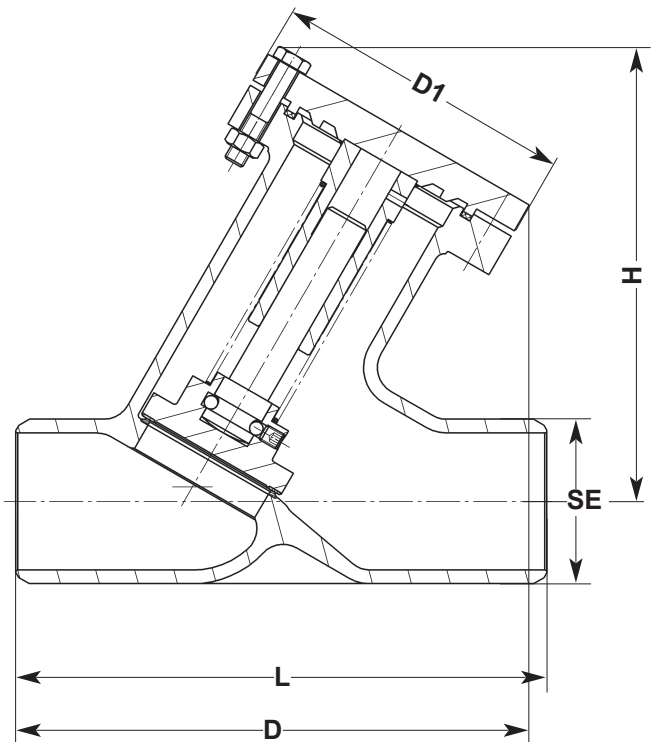
DN 65 - 400			
PN 40			
	C.S.	S.S.	Low temp.
Tmin.	-10°C	-200°C	-50°C
Tmax.	+400°C	+400°C	+300°C

Permissible working pressure acc. EN 1092 - Part 1
Terms of delivery DIN 3230/EN 12266-1
Face to face dimension acc. EN 12982

Available on request:

- Special corrosion resistant materials for:
- Complete valve - Trim
- Soft sealing disc
- Heating jacket

Detailed information and more alternatives are given in the appendix.



Component	Material		
	C.S.	S.S.	Low temp.
	14.1-S-SE	14.1-S-SE-A4	14.1-S-SE-TT
Body	1.0619	1.4408	1.1138
Body seat	1.4370	Stellite 21	1.4370
Bonnet	1.0425	1.4571	1.0566
Disc	1.4571/1.0460	1.4571	1.4571
Disc surface	St.6/1.4009	Stellite 6	Stellite 6
Gasket	1.4571/graphite		
Bolts	A2/70	A2/70	A2/70
Nuts	A2/70	A2/70	A2/70
Spring	1.4310/1.4571	1.4571	1.4310/1.4571
Stem	1.4571	1.4571	1.4571

DN	SE [mm]	L [mm]	D [mm]	H [mm]	D1 [mm]	G [kg]
65	76,1* 3,6	290	260	195	143	13
80	88,9* 4,0	310	300	265	176	26
100	114,3* 5,0	350	340	285	210	34
125	139,7* 4,5	400	375	320	250	49
150	168,3* 5,6	480	525	440	308	88
200	219,1* 7,1	600	595	475	365	120
250	273,0* 8,0	730	805	665	435	142
300	323,9* 8,0	850	870	700	515	272
350	355,6* 8,8	980	945	750	584	366
400	406,4* 11,0	1100	990	780	648	484

Non return valve, y- type with buttwelding ends acc. EN 12627; spring loaded, opening pressure around 0,2 bar. With camprofiled bonnet gasket made of stainless steel 1.4571 with a coating of pure graphite on both sides, housed in a tongue and grooved flange.

Carbon steel: Body made of cast material 1.0619, seat hardfaced with stainless steel 1.4370, disc made of stainless steel 1.4571, sealing surface hardfaced with stellite 6 up to DN 100; above made of 1.0460, hardfaced with 1.4009.

Stainless steel: Body made of cast material 1.4408, seat hardfaced with stellite 21, disc made of stainless steel 1.4571, sealing surface hardfaced with stellite 6.

Low temperature: Body made of cast material 1.1138, seat hardfaced with 1.4370, disc made of stainless steel 1.4571, sealing surface hardfaced with stellite 6.